



# CRANE SAFETY. MADE SIMPLE.



FROM A2B TO LMI  
ONE PANEL.  
ONE SYSTEM.  
ONE PHONE CALL.

# ONE PANEL. ONE SYSTEM. ONE PHONE CALL.

## QUICK, EASY INSTALLATION

Simple design allows users to install our systems on their own cranes in a matter of hours, with no technician required. Great service support is always available, when and if necessary.

## ACCURATE

All systems are factory calibrated to certification-level accuracy.

## EXPANDABLE

Our adaptable technology will fit your budget and provide what is needed when it's needed. Start with a simple load indicator today, and expand to a full LMI system later with ease.

## OPERATOR FRIENDLY

A simplified user interface and new color touchscreen display allows operators to become experts within an hour.

## MEET JOBSITE REQUIREMENTS

The experts at Cranesmart are well informed of jobsite requirements around the world. We can help identify and achieve exactly what's needed for any crane.

## BUILT TOUGH

Our systems are designed to work in all environmental extremes. Temperature from -40°C to +60°C (-40°F to +140°F), saltwater spray, sand storms or 100% humidity are no problem. Hazardous locations certified equipment is available.

## SERVICE

At Cranesmart, we enjoy taking care of our customers. You can count on our friendly, knowledgeable, and experienced staff to provide any information and equipment required, hassle free. All Cranesmart systems are backed by guaranteed service for a minimum of 10 years, and free batteries during the life of the system.

## CUSTOM APPLICATIONS

We strive to meet any crane safety challenge put forth by our customers, including large, unique non-crane applications. Custom systems are engineered to the specific needs of the customer.



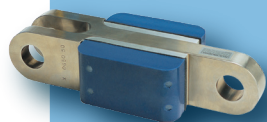


# COMPONENT OVERVIEW



## DISPLAY PANEL

- Main display, receiver, and control module for the system
- Clearly displays sensor transmissions for the operator
- Internally handles all software logic and menu interfaces
- Allows for easy transducer spares and swapping
- USB port for alarm logging and programming upgrades
- Function kickouts available
- Output to existing function kickouts, computer or PLC



### LOAD CELL

- Wirelessly transmits weight on the lift line to the display panel
- Various sizes available: 7.5K, 15K, 25K, 40K, 50K, 80K, 120K



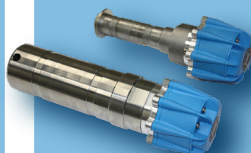
### ANGLE INDICATOR

- Wirelessly transmits boom angle information to the display panel
- Accurate to within 0.1°



### POWERLINE INDICATOR

- Indicates when a machine is too close to a powerline
- Audible and visual alarms notify operators of danger in real time



### LOAD PIN

- 360° free-rotating load sensor
- Factory calibrated, no adjustment required
- Minimum 5:1 safety factor



### A2B

- Monitors the counterweight on the slow speed line of a travelling block
- Wirelessly transmits alarm signal when the block contacts the counterweight



### LINERIDER

- Wirelessly transmits weight on the blocks to the display panel
- Accurate within 1% of actual load to a resolution of 100 lb



### LEVEL INDICATOR

- Indicates if a machine is level, sending an alarm signal if necessary
- Useful where ground thaw, sinking mud, or extreme wind are factors



### WIND SPEED INDICATOR

- Wirelessly transmits wind speed range of 15-80 MPH
- Useful where operations are required to shut down due to extreme wind



### CABLE REEL

- Wirelessly transmits positional information to the display panel
- Custom-fitted to each application

### FULL LMI SYSTEM

- The complete 'Load Moment Indication' system
- Combines load, angle sensing and anti-2-block functionality





[780] 437-2986



info@cranesmart.com



cranesmart.com

4908-97 Street  
Edmonton, Alberta  
Canada T6E 5S1

## MEETING OR EXCEEDING COMPLIANCE REQUIREMENTS

Cranesmart safety equipment is approved and meets and/or exceeds the guidelines set forth by the following regulatory bodies:

